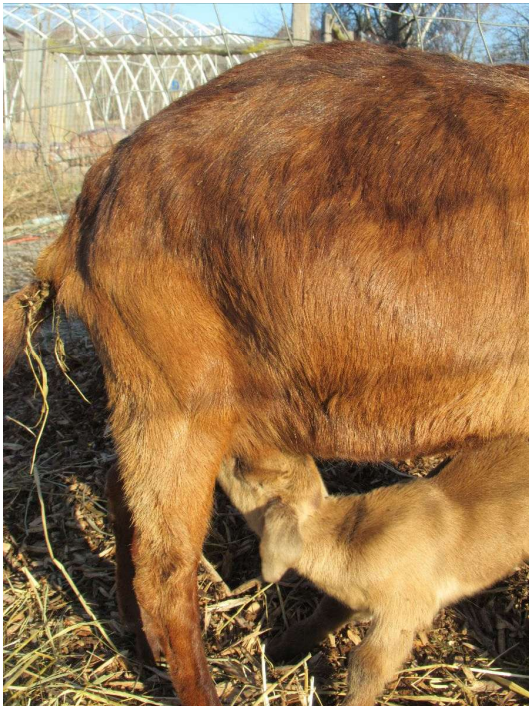


APRIL GREETINGS FROM CROSS ISLAND FARMS



WHEN IS KIDDING TIME



April is the month when we want our goats to have babies as baby goats are thin and lanky and unable to endure very cold temperatures. By April the worst freezes are usually past. As goats have a 5-month gestation period, we try to keep the bucks and does separate until November. When the kids are born the moms dry them off and then help them nurse when they ingest colostrum, the substance that conveys the mother's immunity to the babies.

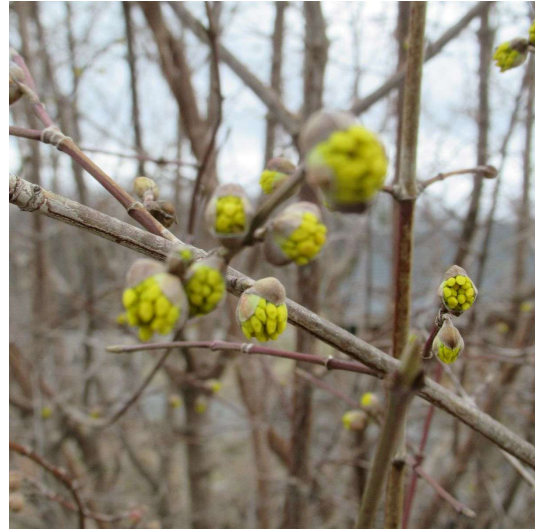
WHAT'S NEW RE; THE TV SHOW



Here is a link to a new promo video for the TV show:

<https://www.dropbox.com/scl/fi/8d5acqt98xto1sppyht4u/HFG-DEMO-REEL.mp4?rlkey=11kpde1cjho4ng2xvlg3kvkt2&st=e8fe384u&dl=0>

WHERE ARE SOME SIGNS OF SPRING



Hazelnut catkins have elongated and become ripe with pollen. Crocuses are in full display. Perennial vegetables like Egyptian onions are emerging. Cornelian cherry buds are beginning to bloom.

WHAT DID THE WEATHER BRING



Late last month we were hit by an ice storm that took down trees and disrupted cable services for hours. here are broken branches on a lilac bush in front of our farmhouse.

HOW DO WE PROPAGATE RHUBARB



Like many other perennial plants, rhubarb is a "clumper" meaning it spreads outward from the center "clumping" on new plants. To propagate, simply chop off a chunk of root with at least one bud and replant. A new plant will grow from the bud. The best time to do this is in early spring when the buds first appear. Other plants that can be propagated this way include day lilies, sorrel, comfrey, hosta, Solomon's seal and many others.

WHERE IS DANI SCHEDULED TO SPEAK



Zoom: Cornell Cooperative Extension of Madison County
Saturday, April 5, 2025, 10 a.m. - 12 p.m.
What is a Forest Garden?

In Person: Macsherry Library, Alexandria Bay
Saturday, April 26 10:30 a.m.-11:30 a.m.
Native Perennial Food Plants for Your Edible Landscape
Call the library at 315-482-2241 to preregister

In Person: Minna Anthony Nature Center
Friday, May 16,2025 6:00 p.m.

Food-Producing Trees

In Person: Macsherry Library, Alexandria Bay
Saturday, May 17, 2025 10:30 a.m.-11:30 a.m.
Perennial Vegetables That Sustain Themselves
Call the library at 315-482-2241 to preregister

ENJOY THE SIGNS OF SPRING NEAR YOU

